



Apt 2 Whirlow Grange 6 Whirlow Grange Close, Whirlow, Sheffield S11

Saxton Mee

Lettings

# Apt 2 Whirlow Grange 6

## Whirlow

Per Calendar Month

# £1,300 Per Calendar

Located within an exclusive and highly desirable development, this luxury ground-floor two-bedroom apartment has been finished to an exceptionally high standard throughout, offering stylish and contemporary living.

The accommodation is accessed via a private entrance and comprises a spacious open-plan living and dining area, ideal for modern living and entertaining. The bespoke kitchen is beautifully hand-painted in Farrow & Ball, complemented by elegant marble worktops and a full range of integrated Siemens appliances, creating a refined yet practical space.

An inner lobby leads to two well-proportioned double bedrooms, along with a stunning luxury bathroom fitted with a high-quality suite, including a separate walk-in shower cubicle and exquisite Carrara marble flooring and wall finishes.

Externally, the development benefits from attractive, well-maintained communal grounds and one allocated private parking space.

UNFURNISHED | 6–12 MONTH TENANCY

Restrictions: No smokers

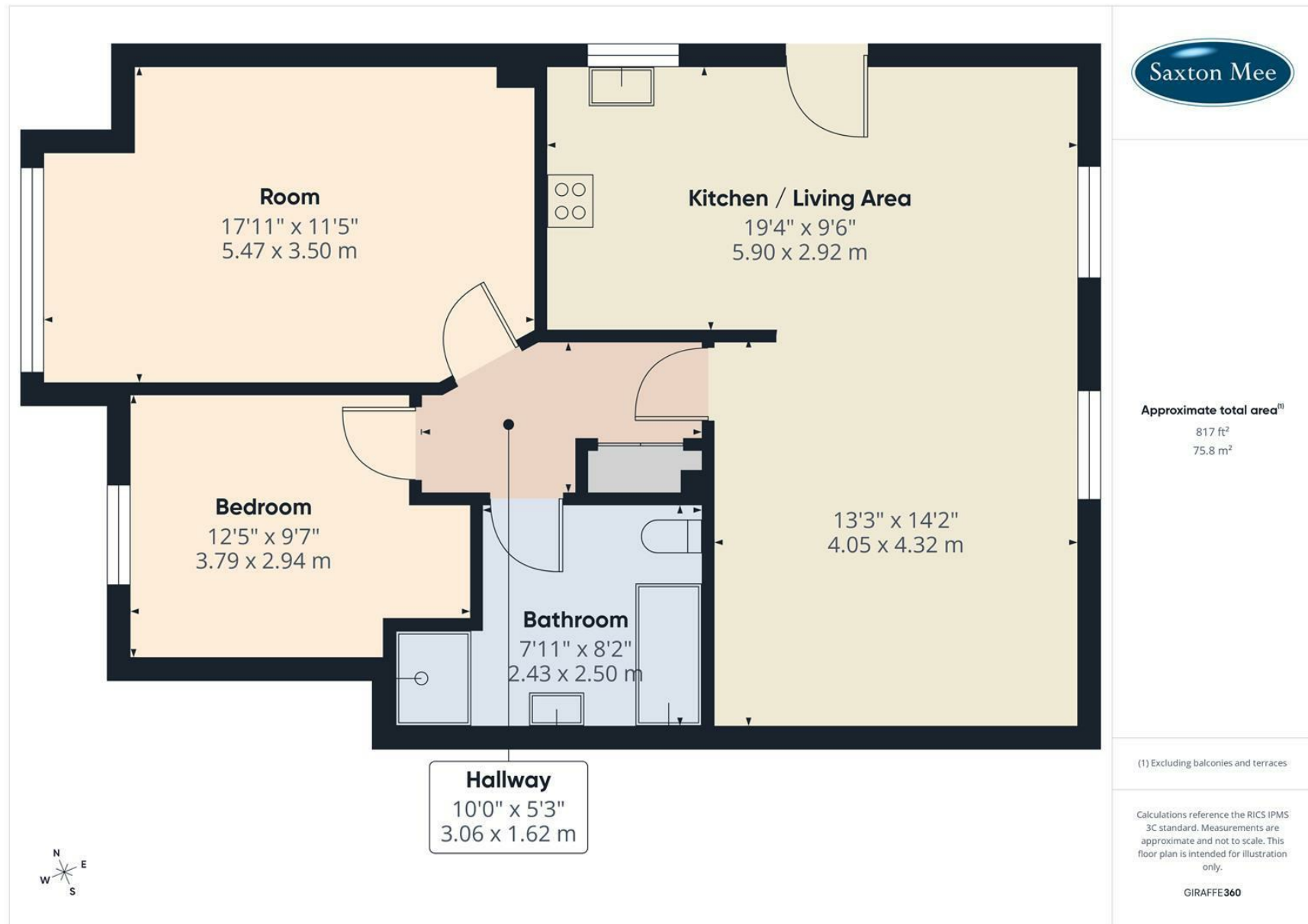
Energy Efficiency Rating: B

Council Tax Band: C

A superb opportunity to rent a high-specification apartment in an exclusive setting.







While we endeavour to make our sales particulars fair, accurate and reliable, they are only a general guide to the property and, accordingly, if there is any point, which is of particular importance to you, please contact the relevant office. The Agents have not tested any apparatus, equipment, fittings or services and so cannot verify they are in working order. The buyer is advised to obtain verification. Please note all the measurement details are approximate and should not be relied upon as exact. All plans, floor plans and maps are for guidance purposes only and are not to scale. Under no circumstances should they be relied upon as exact or for use in planning carpets and other such fixtures, fittings or furnishings. YOUR HOME IS AT RISK IF YOU DO NOT KEEP UP REPAYMENTS ON A MORTGAGE OR OTHER LOAN SECURED ON IT. 'A Life Assurance policy may be requested.' 'Written Quotations of credit terms available on request.'

Banner Cross  
T: 0114 268 3241  
E: [bannercross@saxtonmee.co.uk](mailto:bannercross@saxtonmee.co.uk)  
[www.saxtonmee.co.uk](http://www.saxtonmee.co.uk)

Hathersage  
T: 01433 650009  
E: [hathersage@saxtonmee.co.uk](mailto:hathersage@saxtonmee.co.uk)

Bakewell  
T: 01629 815307  
E: [bakewell@saxtonmee.co.uk](mailto:bakewell@saxtonmee.co.uk)

Matlock  
T: 01629 828250  
E: [matlock@saxtonmee.co.uk](mailto:matlock@saxtonmee.co.uk)